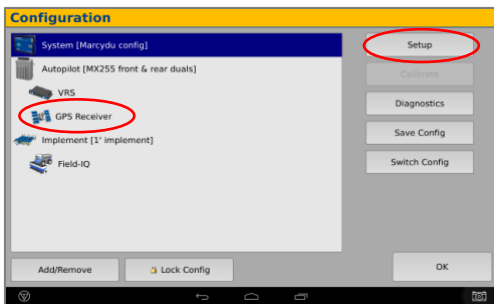


Trimble FMX/ FM1000 Display Setup

1 Install the Beacon into the back of the display into either Port C or D

Select the Wrench icon > GPS Receiver > Setup

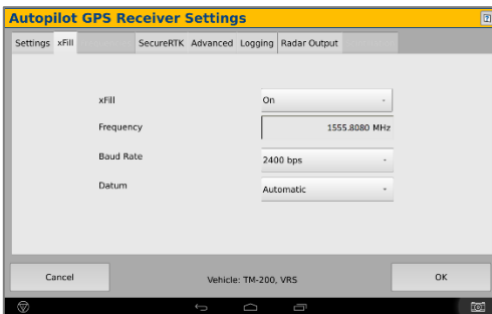
(Password 2009 if needed)



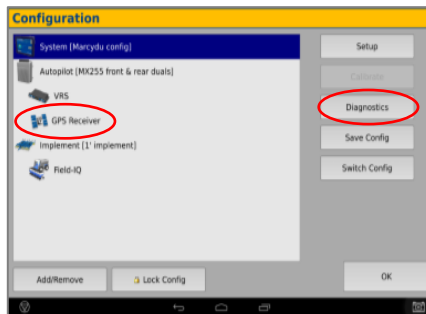
2 On the GPS Receiver setup page change the Corrections to CenterPoint RTK



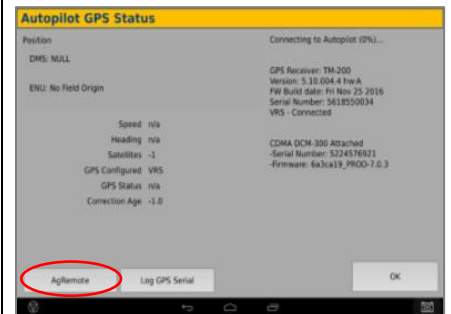
3 Select xFill tab > verify settings according to screenshot below



4 Return to the Configuration page & select GPS receiver and Diagnostics



5 Select Ag Remote



6 Ag Remote Setup instructions

Right arrow twice to Configuration > Down arrow to Configuration menu > Right arrow to Port D config > Down arrow to Enter

Right arrow once to select TSIP & Up arrow to change TSIP to RTCM

*Confirm Baud rate is set to 38k4 > Right arrow 5x to the Bottom TSIP & Up arrow to change to NONE

Press Enter (confirm settings according to screenshot) > Esc icon 3x to return to the main screen

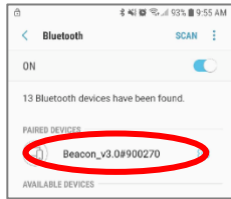
Confirm RTK (with capital R) in top left and A:####



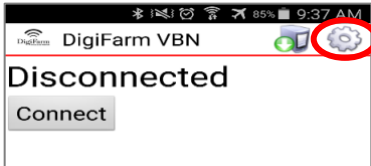
Android Quick Reference Card

Note: Not all android devices function the same; please try your device before purchasing.

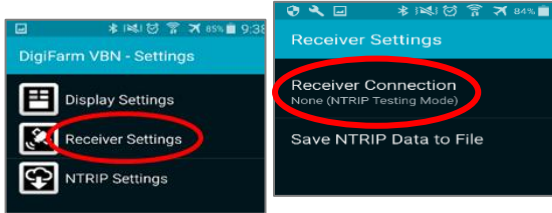
1 Pair the Beacon with android device



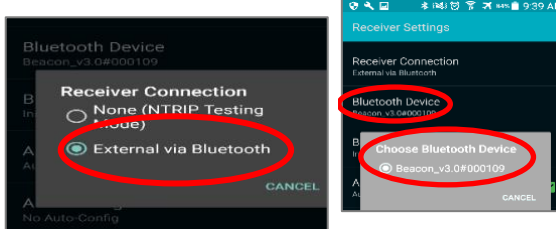
2 Download the DigiFarm NTRIP Client app, open it, and select the gear in the top right corner



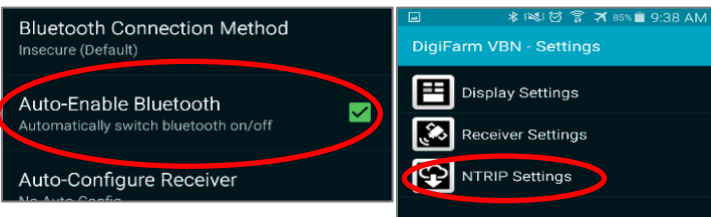
3 Select receiver settings, then receiver connection



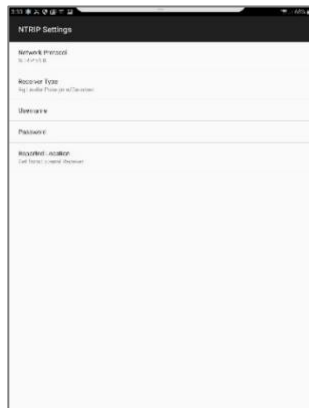
4 Select external via Bluetooth, then choose Bluetooth device



5 Check auto-enable Bluetooth box, then go back & select NTRIP Settings



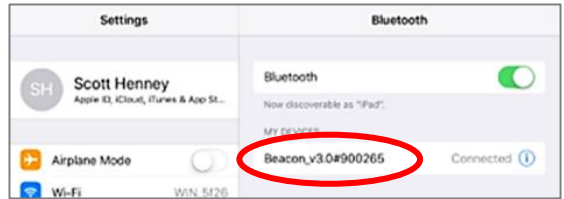
6 Select Network protocol NTRIP v1.0; select your receiver type; enter your DigiFarm username & password



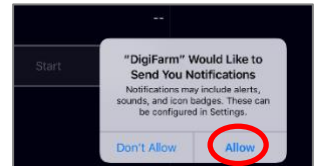
7 Return to the app home screen & tap Connect; the app will start streaming RTK data automatically

iOS Quick Reference Card

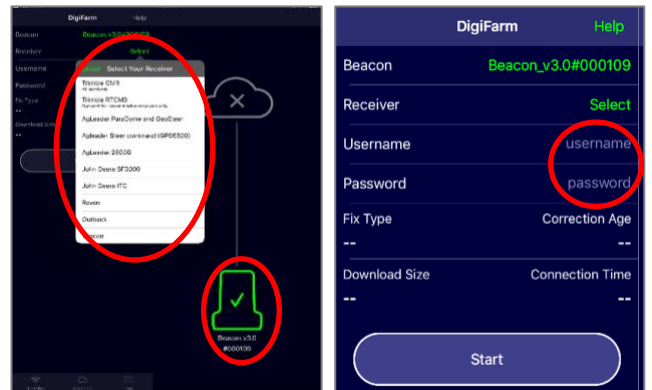
1 Pair the Beacon with the IOS device via the settings app



2 Download the DigiFarm NTRIP Client app, open it, and allow notifications



3 Confirm Beacon connection within the app; then select your receiver type; & enter your username & password



4 Tap the green Start button and allow location access, then you will start streaming RTK data

