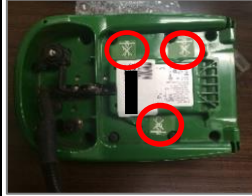


#### John Deere SF3000/SF6000 John Deere Smart Cable & RV50 Install & Setup

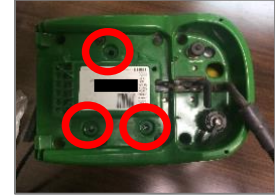
**1** Using a T15 torx bit, remove 4 screws & remove yellow dome



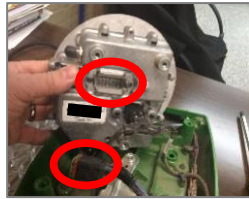
**2** Carefully remove decals exposing 3 screws; save decals to reinstall later



**3** Remove 3 screws to detach antenna from shroud



**4** Lift antenna from shroud to expose main connector & unplug it



**5** Reassemble the receiver so the JDSC routes through the square hole in the rear of the shroud



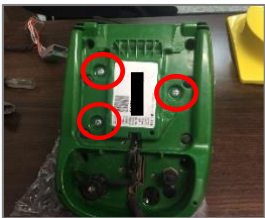
**6** Plug JDSC into antenna base & plug Deere connector into the JDSC



**7** Gently set antenna base on shroud



**8** Install 3 screws & decals previously removed



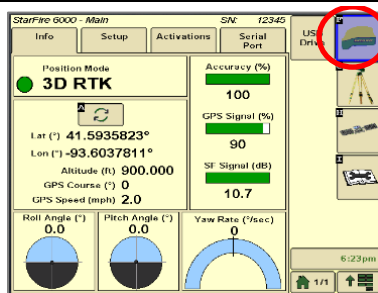
**9** Install Beacon connector to back of receiver using screw provided & secure black flap back on receiver



**10** Reattach yellow dome onto the shroud & plug in the RV50 cabling

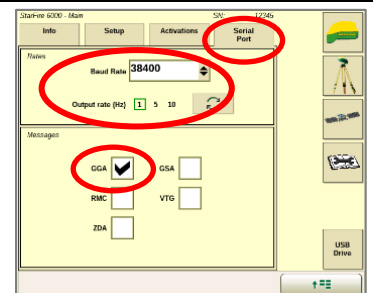


**11** Go to the Starfire Main Settings page & select the GPS Receiver icon in the Top right corner (F)

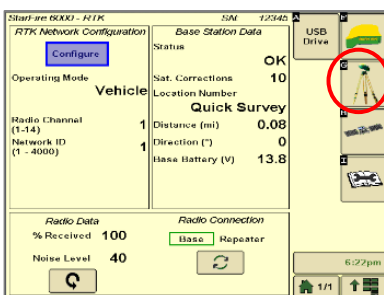


**12** Go to the serial port page & confirm: Baud Rate at least 19200, Output rate at 1 Hz & the GGA box check marked

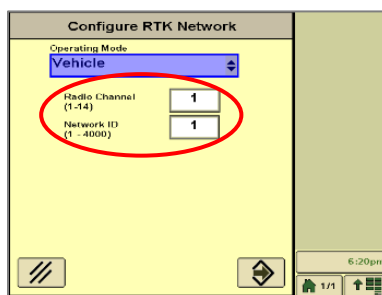
\*the JDSC adapter now automatically adjusts to the baud rate entered here



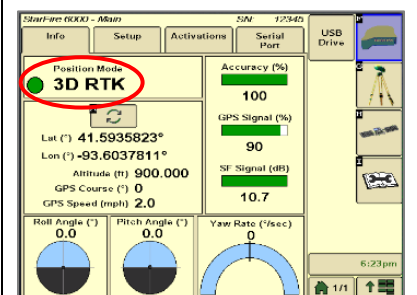
**13** Continue to the RTK setup page (G) Select Configure



**14** Set the Operating Mode to Vehicle & Radio Channel & Network ID both to 1



**15** Confirm RTK fix





# DigiFarm

## Quick Reference Card

John Deere SF3000/SF6000

JDSC & RV50

*\*Note- If this unit was ordered with a subscription, it will be preprogrammed and plug and play ready.  
The following instructions will not be needed.*

Log into the device via WAN static IP (166.XXX.XXX.XXX:8080) or LAN connection (192.168.1.1:8080) on Port 8080.

Username: digifarm

Password: digifarm

You will then be directed to the page shown below. On this page you can select a receiver preset based on the receiver type you have, then enter your username and password. Save device info at the bottom then select the reboot icon at the top of the screen.

The screenshot shows the 'DigiFarm: NTRIP Client Settings Manager' web interface. It includes a 'Logged in as: digifarm | Log Out' status bar. Below are several configuration fields: 'Presets' (dropdown menu showing 'NovAtel (Raven: RS1, Cruiser II with RTK, 600s, Envizio Pro/Pro II, Viper 4)'), 'Host' (dropdown menu showing 'caster.godigifarm.com'), 'Port' (text input field with '3101'), 'Mount Point' (text input field with 'VBN\_RTCM3\_NOV'), and 'Serial Port - Baud Rate' (dropdown menu showing '38400'). Below these fields are sections for 'Username' and 'Password' (text input fields), 'Internal GPS' (checkbox), 'Manual GPS' (checkbox), and two text input fields for 'Manual GPS - Latitude (Example: "4043.124436,N")' and 'Manual GPS - Longitude (Example: "9640.586358,W")'. A blue 'Save Changes' button is located at the bottom left of the form.

