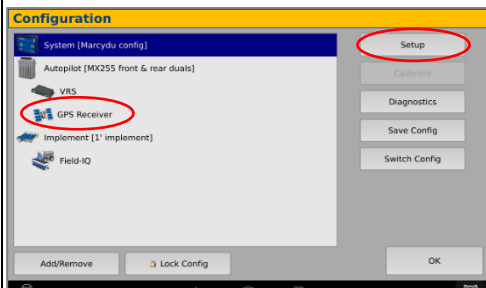


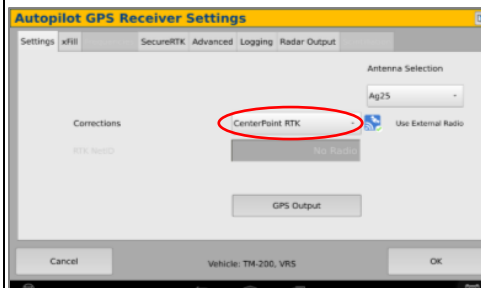
Trimble XCN 2050/ TMX 2050 Display Setup

1 Install the Beacon into the EXP-100 port expander cable

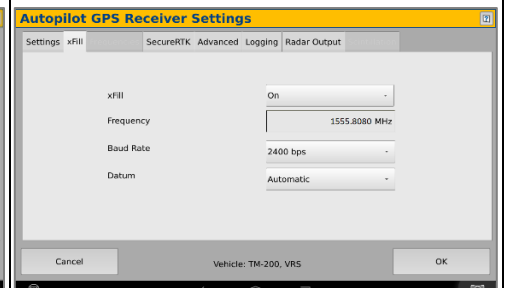
Home> Wrench icon> GPS Receiver > Setup



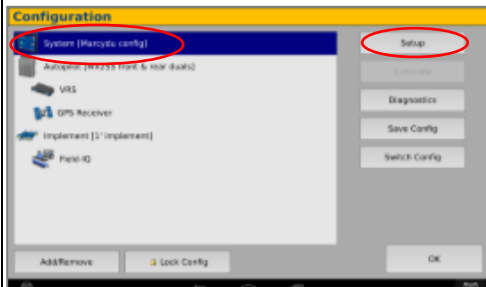
2 On the GPS Receiver setup page change the Corrections to CenterPoint RTK



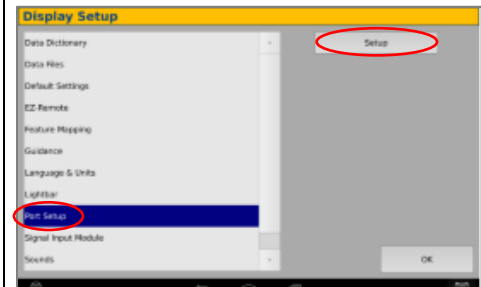
3 Select xFill tab> verify settings according to screenshot below



4 Select OK to return to Configuration page & select System> Setup



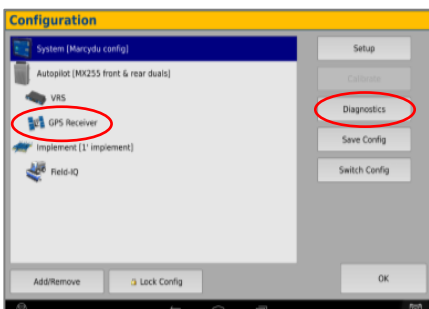
4 Scroll down & select Port setup> Setup



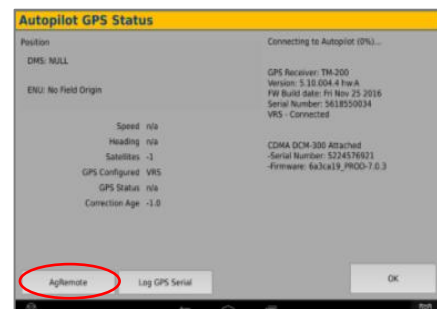
4 Select the EXP-100 serial # from the AG 815 Secondary Serial dropdown



7 Select OK to return to the Configuration page & select GPS receiver & Diagnostics (password 2009 if needed)



8 Select Ag Remote



9 Right arrow twice to Configuration> Down arrow once to Configuration menu> Right arrow to Port D config> Down arrow to Enter

Right arrow once to select TSIP & Up arrow to change TSIP to RTCM

*Confirm Baud rate is set to 38k4> Right arrow 5x to the Bottom TSIP & Up arrow to change to NONE> Press Enter

Confirm settings according to screenshot> Esc icon 3x to return to the main screen

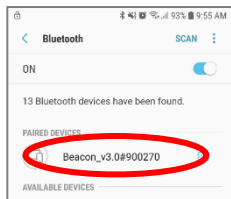
Open a field & confirm RTK



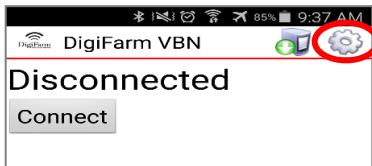
Android Quick Reference Card

Note: Not all android devices function the same; please try your device before purchasing.

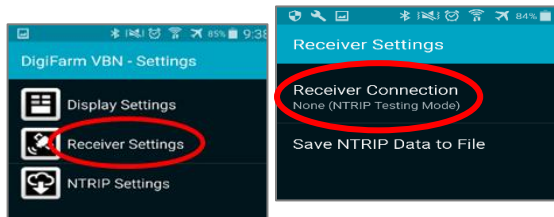
1 Pair the Beacon with android device



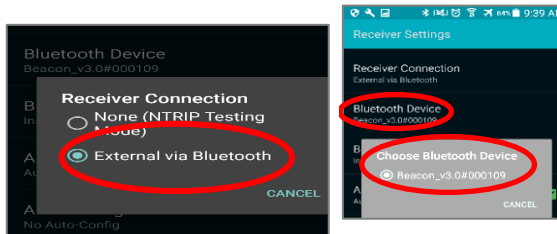
2 Download the **DigiFarm NTRIP Client** app, open it, and select the gear in the top right corner



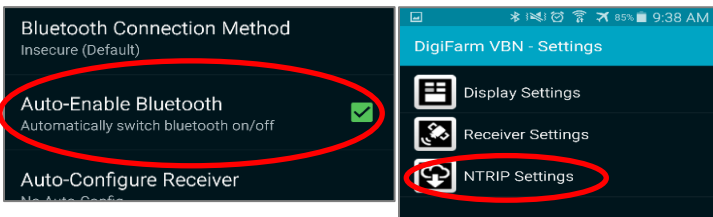
3 Select receiver settings, then receiver connection



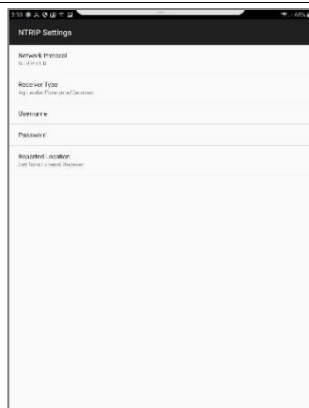
4 Select external via Bluetooth, then choose Bluetooth device



5 Check auto-enable Bluetooth box, then go back & select NTRIP Settings



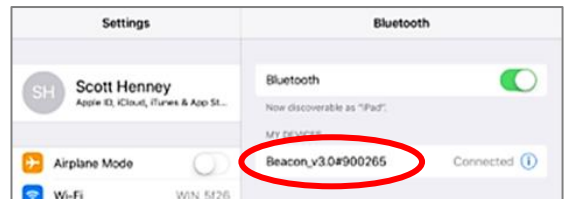
6 Select Network protocol NTRIP v1.0; select your receiver type; enter your DigiFarm username & password



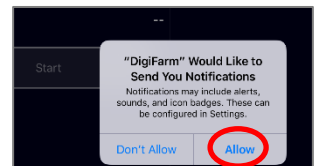
7 Return to the app home screen & tap Connect; the app will start streaming RTK data automatically

iOS Quick Reference Card

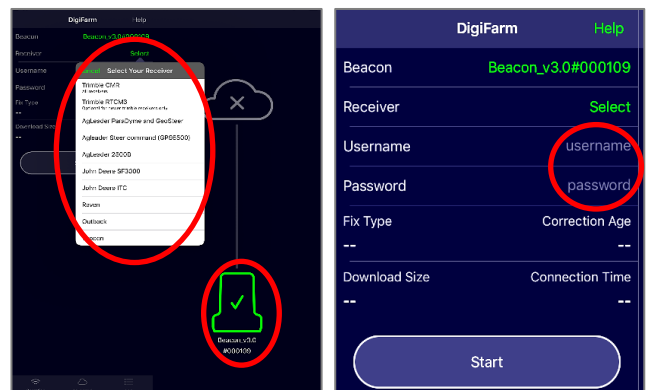
1 Pair the Beacon with the IOS device via the settings app



2 Download the **DigiFarm NTRIP Client** app, open it, and allow notifications



3 Confirm Beacon connection within the app; then select your receiver type; & enter your username & password



4 Tap the green Start button and allow location access, then you will start streaming RTK data

