

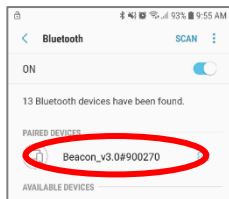
#### Trimble CNH 372/262/252 Display Setup

<p><b>1</b> Connect the Beacon to the Port B connection on the Receiver</p> <p>Run Screen&gt; Back&gt; Toolbox &amp; select the GPS tab at the bottom of the screen</p> <p>On GPS setup screen, set the Correction type to RTK, Correction level to AGGPS radio, enable Backup Source to xFill, set xFill Setup Options to Custom&gt; select xFill Setup Edit</p>	<p><b>2</b> Set the Frequency to 1555.8080 MHz &amp; change xFill Datum Select to NAD83</p>	<p><b>3</b> From the Run Screen select Back&gt; Diagnostics&gt; scroll right to RDI tab</p>
<p><b>4</b> Program Port C of the receiver on the RDI screen:</p> <p>Right arrow twice to Configuration&gt; Down arrow to Config menu&gt; Right arrow to Port C config&gt; Down arrow to Enter&gt; Port C Flow&gt; verify Port C Out: ON &amp; Pt-B Flow is OFF&gt; Down arrow once to next screen</p>	<p><b>5</b> Right arrow once to select TSIP&gt; Down arrow to RTCM (CMR for 252/262) &amp; Confirm Baud rate is set to 38k.4</p> <p>Right arrow 5x to the Bottom TSIP&gt; Down arrow to change this to NMEA&gt; Enter (see screenshot below to confirm settings)</p>	
<p><b>6</b> Down arrow once &amp; confirm NMEA1 has only GGA capitalized. If others are capitalized, Right arrow to highlight &amp; Down arrow to make them lower case &gt; Enter</p>	<p><b>7</b> Down arrow to NMEA2 &amp; confirm nothing is capitalized. Repeat step 6 to make everything lower case on NMEA2 if needed&gt; ESC 3x</p>	<p><b>8</b> Confirm RTK (with capital R) in top left and A:####</p>

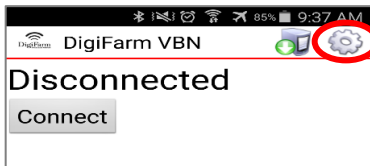
#### Android Quick Reference Card

Note: Not all android devices function the same; please try your device before purchasing.

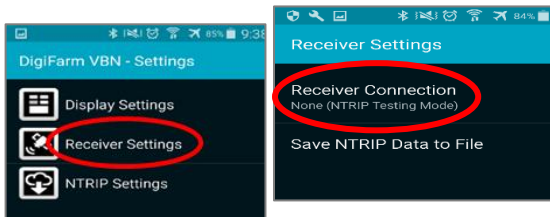
1 Pair the Beacon with android device



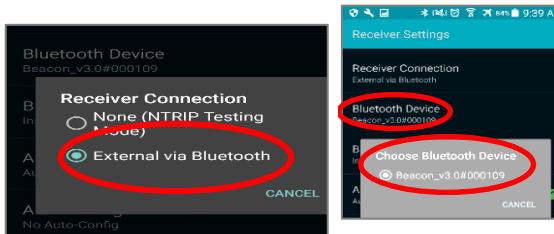
2 Download the **DigiFarm NTRIP Client** app, open it, and select the gear in the top right corner



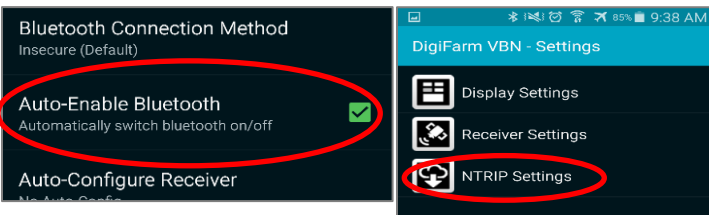
3 Select receiver settings, then receiver connection



4 Select external via Bluetooth, then choose Bluetooth device



5 Check auto-enable Bluetooth box, then go back & select NTRIP Settings



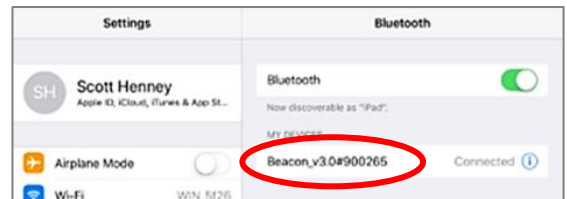
6 Select Network protocol NTRIP v1.0; select your receiver type; enter your DigiFarm username & password



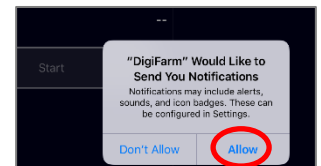
7 Return to the app home screen & tap Connect; the app will start streaming RTK data automatically

#### iOS Quick Reference Card

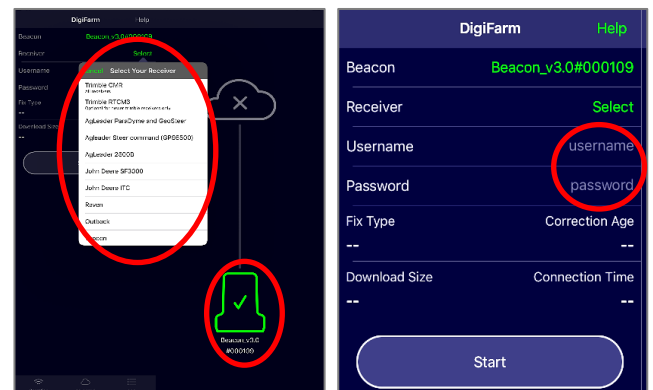
1 Pair the Beacon with the IOS device via the settings app



2 Download the **DigiFarm NTRIP Client** app, open it, and allow notifications



3 Confirm Beacon connection within the app; then select your receiver type; & enter your username & password



4 Tap the green Start button and allow location access, then you will start streaming RTK data

