

John Deere SF3000/SF6000 John Deere Smart Cable & RV50 Install & Setup

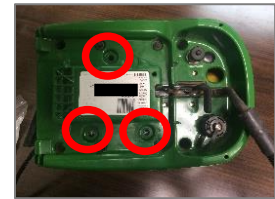
1 Using a T15 torx bit, remove 4 screws & remove yellow dome



2 Carefully remove decals exposing 3 screws; save decals to reinstall later



3 Remove 3 screws to detach antenna from shroud



4 Lift antenna from shroud to expose main connector & unplug it



5 Reassemble the receiver so the JDSC routes through the square hole in the rear of the shroud



6 Plug JDSC into antenna base & plug Deere connector into the JDSC



7 Gently set antenna base on shroud



8 Install 3 screws & decals previously removed



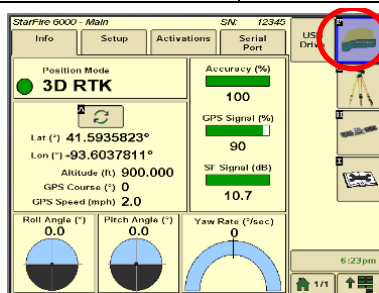
9 Install Beacon connector to back of receiver using screw provided & secure black flap back on receiver



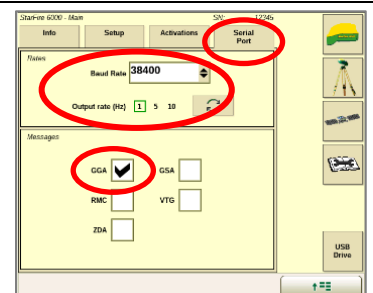
10 Reattach yellow dome onto the shroud & plug in the RV50 cabling



11 Go to the Starfire Main Settings page & select the GPS Receiver icon in the Top right corner (F)

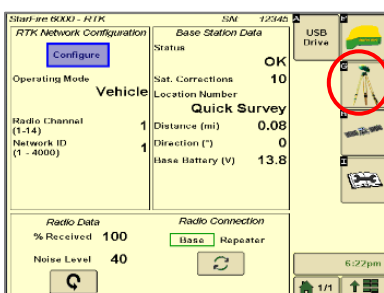


12 Go to the serial port page & confirm: Baud Rate at least 19200, Output rate at 1 Hz & the GGA box check marked

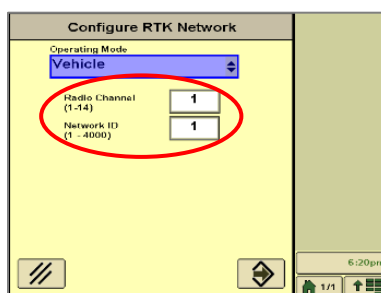


*the JDSC adapter now automatically adjusts to the baud rate entered here

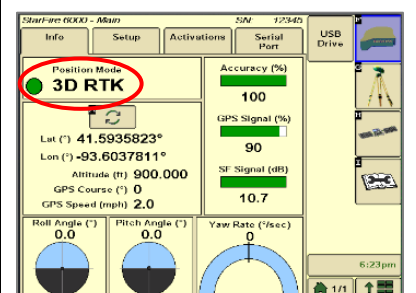
13 Continue to the RTK setup page (G)



14 Set the Radio Channel & Network ID both to 1



15 Confirm RTK fix





DigiFarm

Quick Reference Card

John Deere SF3000/SF6000

JDSC & RV50

*Note- If this unit was ordered with a subscription, it will be preprogrammed and plug and play ready.

The following instructions will not be needed.

Log into the device via WAN static IP (166.XXX.XXX.XXX:8080) or LAN connection (192.168.1.1:8080) on Port 8080.

Username: digifarm

Password: digifarm

You will then be directed to the page shown below. On this page you can select a receiver preset based on the receiver type you have, then enter your username and password. Save device info at the bottom then select the reboot icon at the top of the screen.

DigiFarm: NTRIP Client Settings Manager

Logged in as: digifarm | [Log Out](#)

Presets
NovAtel (Raven: RS1, Cruiser II with RTK, 600s, Envizio Pro/Pro II, Viper 4)

Host
caster.godigifarm.com

Port
3101

Mount Point
VBN_RTCM3_NOV

Serial Port - Baud Rate
38400

Username

Password

Internal GPS

Manual GPS
Manual GPS - Latitude (Example: "4043.124436,N")

Manual GPS - Longitude (Example: "9640.586358,W")

[Save Changes](#)

