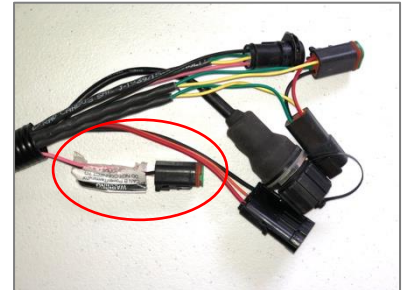



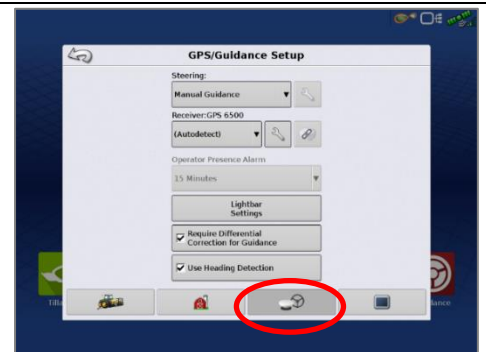
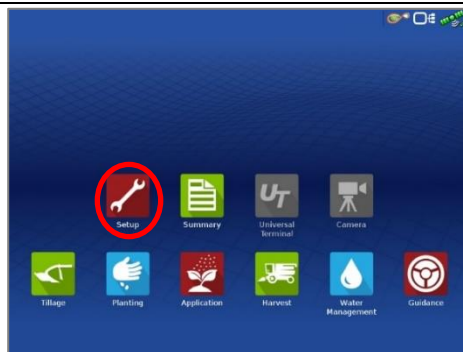
Ag Leader ParaDyme GeoSteer Set Up

Note: A null modem cable from your DigiFarm modem kit is needed for all modems, but not for Beacons.

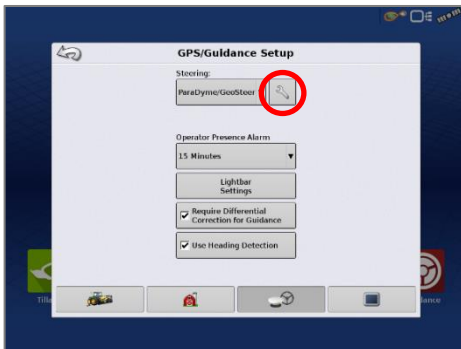
- Begin by connecting the RV50 and adapter to the **Port A connection** on the ParaDyme or GeoSteer cabling
- Connect the Power Tee to the Can B power/ Terminator connection on the Display cable



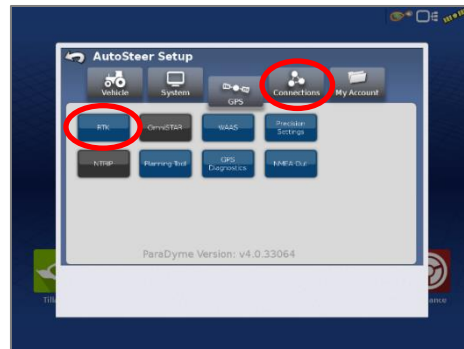
- Tap the Setup wrench icon, then the  icon



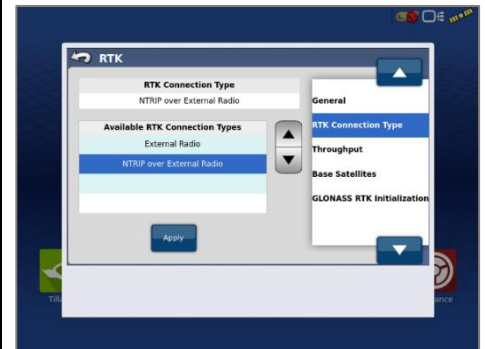
- From the GPS/Guidance setup screen, select the wrench next to ParaDyme/GeoSteer



- Next select the GPS tab, then the RTK icon



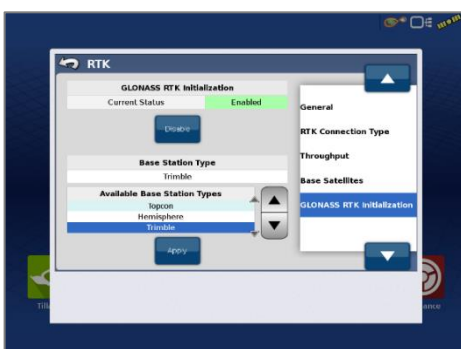
- Select the Connection type on the right & ensure it's set to NTRIP over External Radio



- Select GLONASS RTK Initialization on the right & enable it

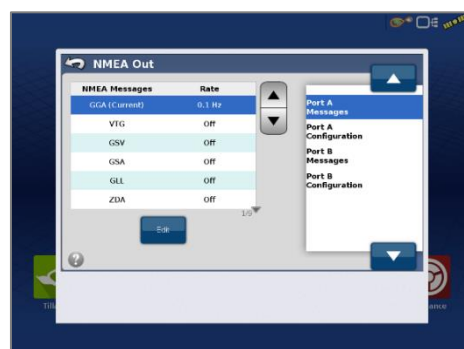
- Make sure the Base Station Type is set to Trimble

* if GLONASS does not appear, skip to the next step



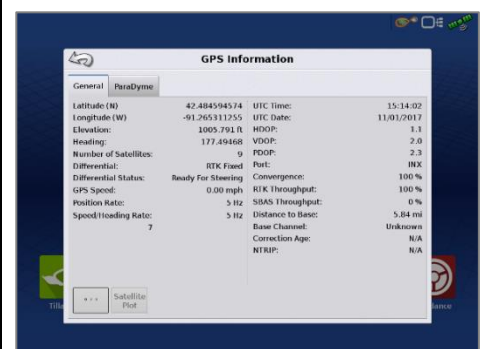
- Back out of this screen & select the NMEA Out icon

- Port A messages should match the screenshot below
- Port A Config> set Baud Rate to 38400



- Back out of this screen, select precision settings & set to "RTK Only"

- Return to the run screen & confirm you have throughput & RTK fix





DigiFarm

Quick Reference Card Ag Leader ParaDyme GeoSteer & RV50

*Note- If this unit was ordered with a subscription, it will be preprogrammed and plug and play ready.
The following instructions will not be needed.

Log into the device via WAN static IP (166.XXX.XXX.XXX:8080) or LAN connection (192.168.1.1:8080) on Port 8080.

Username: digifarm

Password: digifarm

You will then be directed to the page shown below. On this page you can select a receiver preset based on the receiver type you have, then enter your username and password. Save device info at the bottom then select the reboot icon at the top of the screen.

DigiFarm: NTRIP Client Settings Manager

Logged in as: digifarm | [Log Out](#)

Presets
NovAtel (Raven: RS1, Cruiser II with RTK, 600s, Envizio Pro/Pro II, Viper 4)

Host
caster.godigifarm.com

Port
3101

Mount Point
VBN_RTCM3_NOV

Serial Port - Baud Rate
38400

Username

Password

Internal GPS

Manual GPS
Manual GPS - Latitude (Example: "4043.124436,N")

Manual GPS - Longitude (Example: "9640.586358,W")

[Save Changes](#)

