

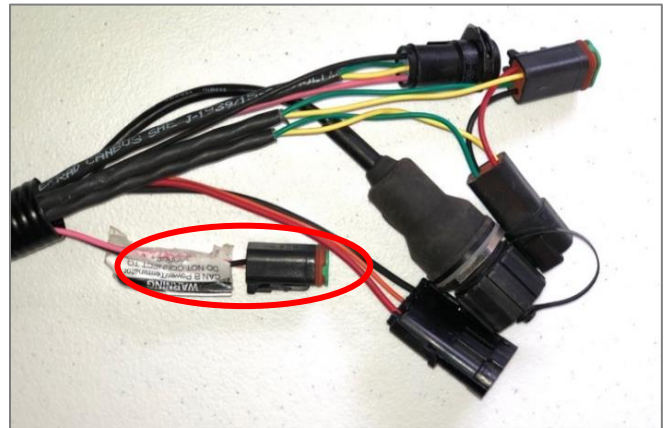
Ag Leader 6500 & 7500 Display Setup

1 Connect the RV50 and the adapter to the Port B connection on the Ag Leader 6500/7500 cabling

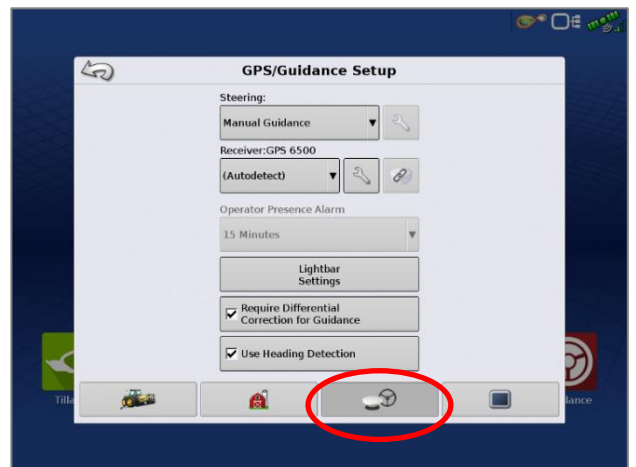
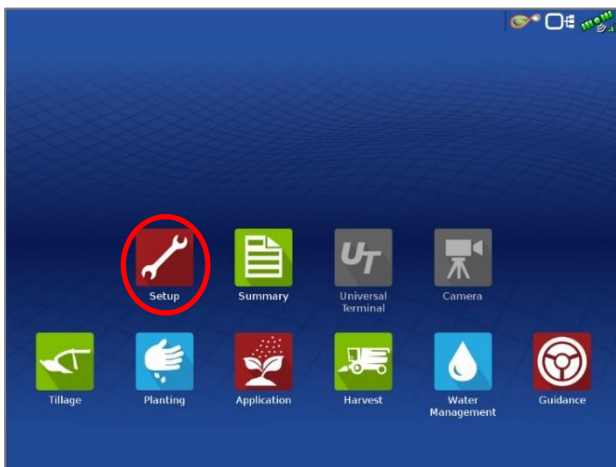
Note: The null modem cable is needed for all modems



2 Connect the Power Tee to the Can B power/terminator connection on the Display cable



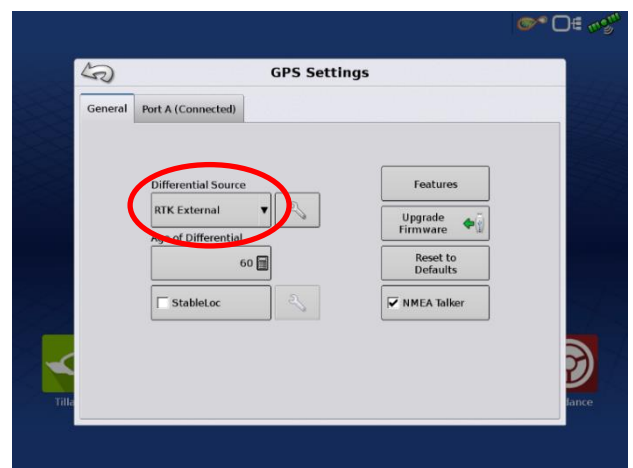
3 Tap the Setup wrench icon, then the  icon



4 From the GPS/Guidance setup screen, select the wrench icon next to “Autodetect”



5 Ensure the Differential source is set to “RTK external”



Quick Reference Card

Ag Leader 6500, 7500 & RV50

*Note- If this unit was ordered with a subscription, it will be preprogrammed and plug and play ready.
The following instructions will not be needed.

Log into the device via WAN static IP (166.XXX.XXX.XXX:8080) or LAN connection (192.168.1.1:8080) on Port 8080.

Username: digifarm

Password: digifarm

You will then be directed to the page shown below. On this page you can select a receiver preset based on the receiver type you have, then enter your username and password. Save device info at the bottom then select the reboot icon at the top of the screen.

DigiFarm: NTRIP Client Settings Manager

Logged in as: digifarm | [Log Out](#)

Presets

NovAtel (Raven: RS1, Cruiser II with RTK, 600s, Envizio Pro/Pro II, Viper 4)

Host

caster.godigifarm.com

Port

3101

Mount Point

VBN_RTCM3_NOV

Serial Port - Baud Rate

38400

Username

Password

Internal GPS

Manual GPS

Manual GPS - Latitude (Example: "4043.124436,N")

Manual GPS - Longitude (Example: "9640.586358,W")

[Save Changes](#)

