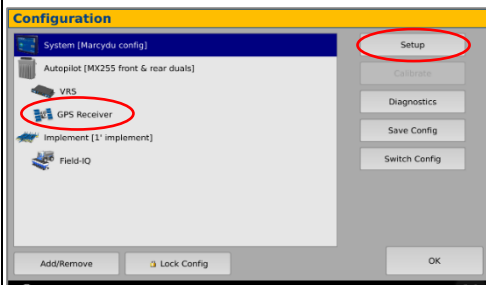
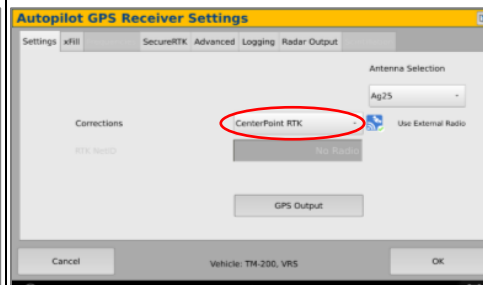


#### Trimble XCN 2050/ TMX 2050 Display Setup

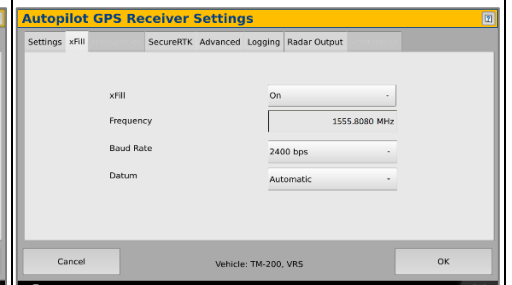
1 Install the RV50 Cable into the back of the display into either Port C or D  
Select the Wrench icon> GPS Receiver



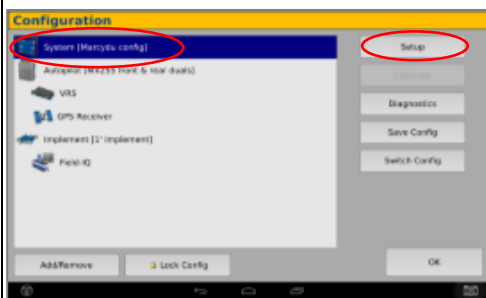
2 On the GPS Receiver setup page change the Corrections to CenterPoint RTK



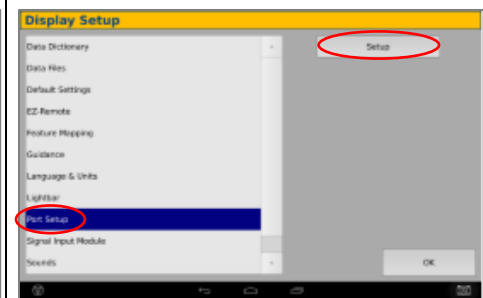
3 Select xFill tab> verify settings according to screenshot below



4 Return to the Configuration page & select System> Setup>



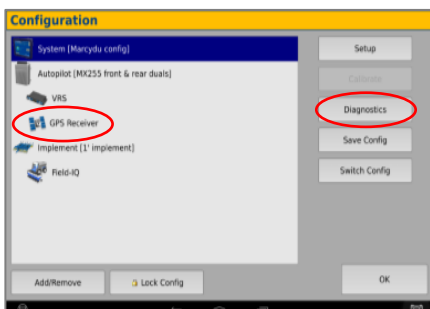
4 Scroll down to Port setup> Setup>



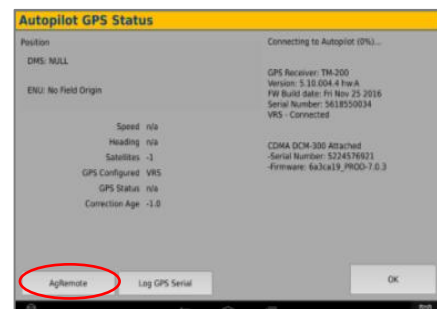
4 Select EXP-100 SN from the AG 815 Secondary Serial dropdown



7 Return to the Configuration page & select GPS receiver and Diagnostics (password 2009)



8 Select Ag Remote



9 Ag Remote Setup instructions



Right arrow twice to Configuration> Down arrow to Configuration menu> Right arrow to Port D config> Down arrow to Enter

Right arrow once to select TSIP & Up arrow to change TSIP to RTCM

\*Confirm Baud rate is set to 38k4> Right arrow 5x to the Bottom TSIP & Up arrow to change to NONE

Press Enter (confirm settings according to screenshot)> Esc icon 3x to return to the main screen

Confirm RTK (with capital R) in top left and A:####



# DigiFarm

## Quick Reference Card

### Trimble XCN 2050/ TMX 2050 & RV50

\*Note- If this unit was ordered with a subscription, it will be preprogrammed and plug and play ready.

The following instructions will not be needed.

Log into the device via WAN static IP (166.XXX.XXX.XXX:8080) or LAN connection (192.168.1.1:8080) on Port 8080.

Username: digifarm

Password: digifarm

You will then be directed to the page shown below. On this page you can select a receiver preset based on the receiver type you have, then enter your username and password. Save device info at the bottom then select the reboot icon at the top of the screen.

### DigiFarm: NTRIP Client Settings Manager

Logged in as: digifarm | [Log Out](#)

Presets  
NovAtel (Raven: RS1, Cruiser II with RTK, 600s, Envizio Pro/Pro II, Viper 4)

Host  
caster.godigifarm.com

Port  
3101

Mount Point  
VBN\_RTCM3\_NOV

Serial Port - Baud Rate  
38400

---

Username

Password

Internal GPS

Manual GPS  
Manual GPS - Latitude (Example: "4043.124436,N")

Manual GPS - Longitude (Example: "9640.586358,W")

[Save Changes](#)

