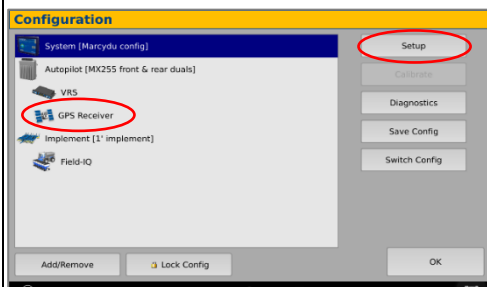
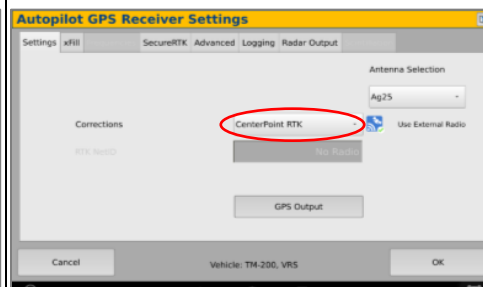


Trimble XCN 2050/ TMX 2050 Display Setup

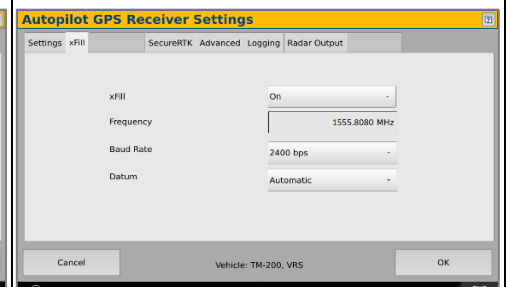
1 Install the RV50 Cable into the back of the display into either Port C or D
Select the Wrench icon> GPS Receiver



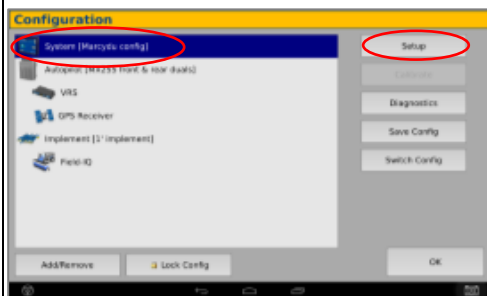
2 On the GPS Receiver setup page change the Corrections to CenterPoint RTK



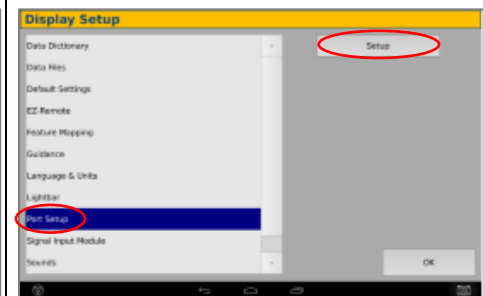
3 Select xFill tab> verify settings according to screenshot below



4 Return to the Configuration page & select System> Setup>



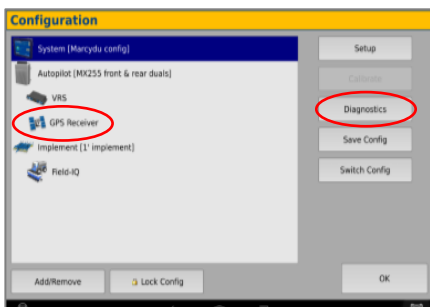
4 Scroll down to Port setup> Setup>



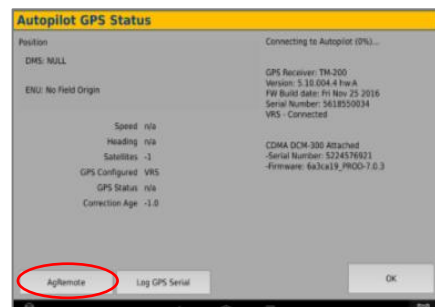
4 Select EXP-100 SN from the AG 815 Secondary Serial dropdown



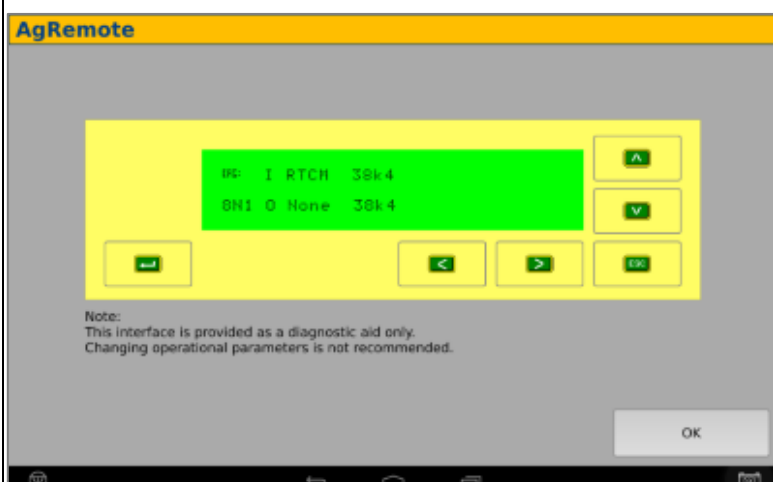
7 Return to the Configuration page & select GPS receiver and Diagnostics (password 2009)



8 Select Ag Remote



9 Ag Remote Setup instructions



Right arrow twice to Configuration> Down arrow to Configuration menu> Right arrow to Port D config> Down arrow to Enter

Right arrow once to select TSIP & Up arrow to change TSIP to RTCM

*Confirm Baud rate is set to 38k4> Right arrow 5x to the Bottom TSIP & Up arrow to change to NONE

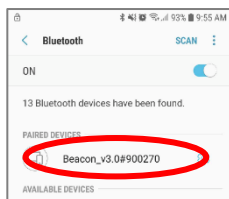
Press Enter (confirm settings according to screenshot)> Esc icon 3x to return to the main screen

Confirm RTK (with capital R) in top left and A:####

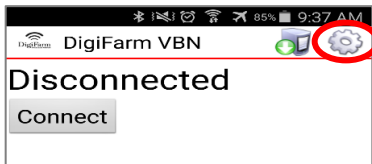
Android Quick Reference Card

Note: Not all android devices function the same; please try your device before purchasing.

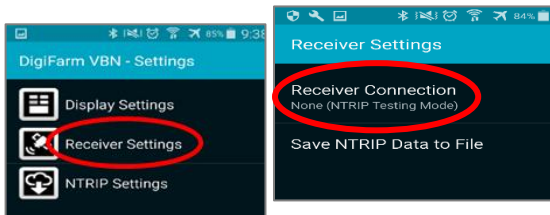
1 Pair the Beacon with android device



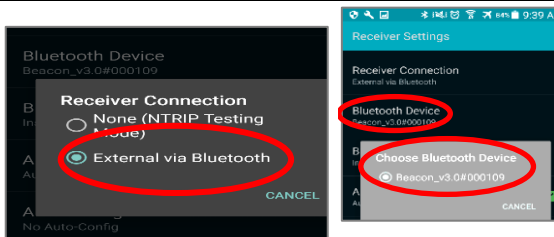
2 Download the **DigiFarm NTRIP Client** app, open it, and select the gear in the top right corner



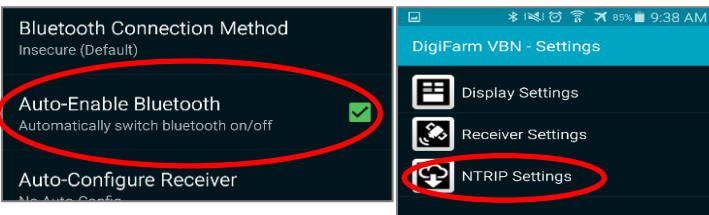
3 Select receiver settings, then receiver connection



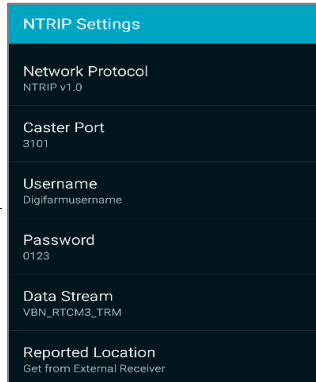
4 Select external via Bluetooth, then choose Bluetooth device



5 Check auto-enable Bluetooth box, then go back & select NTRIP Settings



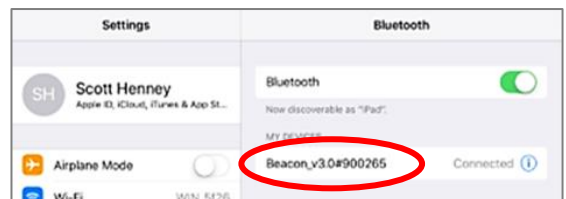
6 Select Network protocol NTRIP v1.0, Caster Port 3101, enter your username & password from DigiFarm; download source table; and get from external receiver



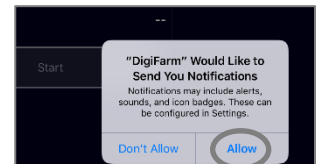
7 Return to the app home screen & tap Connect; the mountpoint list will appear—select the correct one; once selected, the app will start streaming RTK data automatically

iOS Quick Reference Card

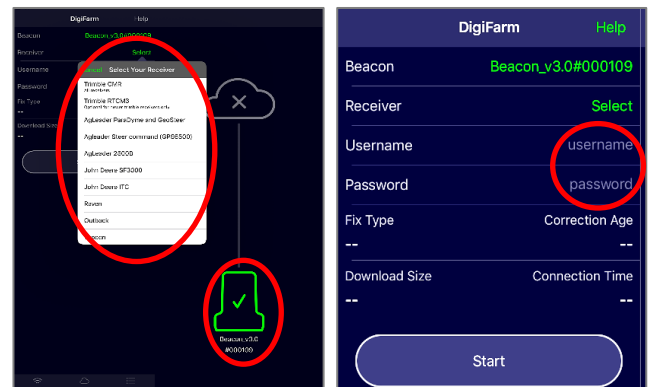
1 Pair the Beacon with the IOS device via the settings app



2 Download the **DigiFarm NTRIP Client** app, open it, and allow notifications



3 Confirm Beacon connection within the app; then select your receiver type; & enter your username & password



4 Tap the green Start button and allow location access, then you will start streaming RTK data

