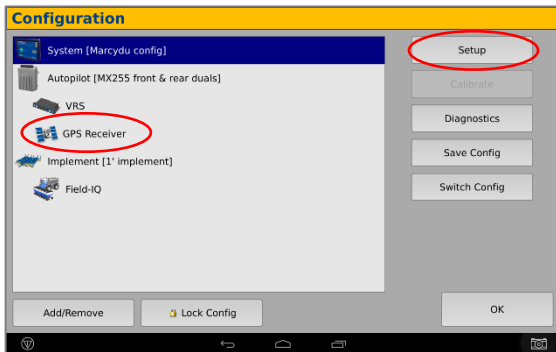


#### Trimble FMX/ FM1000 Display Setup

1 Install the RV50 Cable into the back of the display into either Port C or D

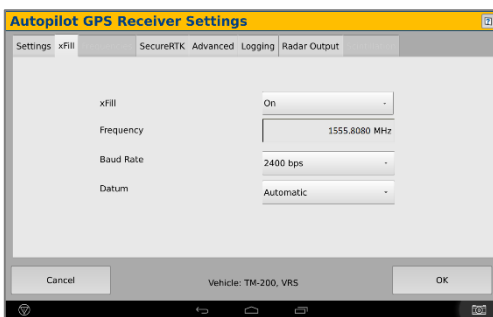
Select the Wrench icon > GPS Receiver > Setup



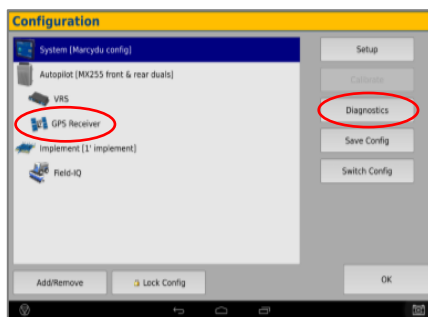
2 On the GPS Receiver setup page change the Corrections to CenterPoint RTK



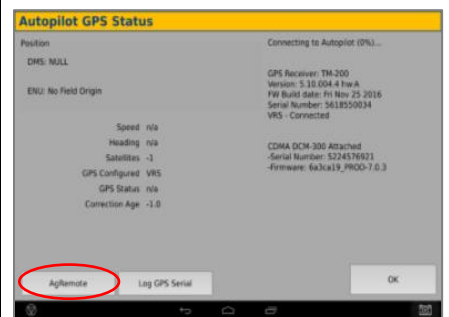
3 Select xFill tab > verify settings according to screenshot below



4 Return to the Configuration page & select GPS receiver and Diagnostics



5 Select Ag Remote



6 Ag Remote Setup instructions

Right arrow twice to Configuration > Down arrow to Configuration menu > Right arrow to Port D config > Down arrow to Enter

Right arrow once to select TSIP & Up arrow to change TSIP to RTCM

\*Confirm Baud rate is set to 38k4 > Right arrow 5x to the Bottom TSIP & Up arrow to change to NONE

Press Enter (confirm settings according to screenshot) > Esc icon 3x to return to the main screen

Confirm RTK (with capital R) in top left and A:####

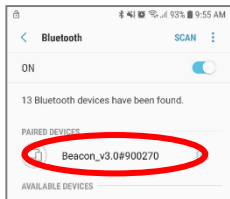


#### Android Quick Reference Card

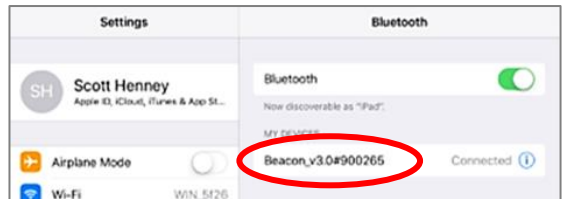
#### iOS Quick Reference Card

Note: Not all android devices function the same; please try your device before purchasing.

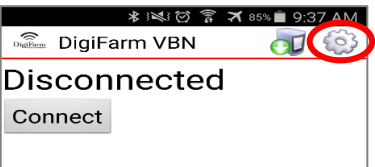
1 Pair the Beacon with android device



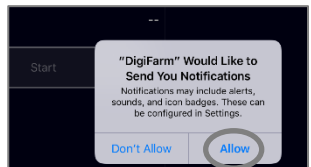
1 Pair the Beacon with the IOS device via the settings app



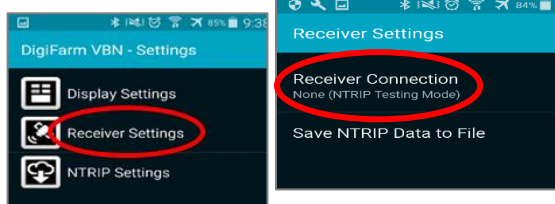
2 Download the **DigiFarm NTRIP Client** app, open it, and select the gear in the top right corner



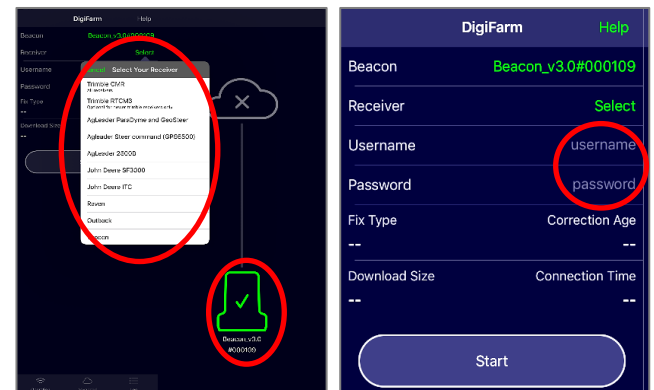
2 Download the **DigiFarm NTRIP Client** app, open it, and allow notifications



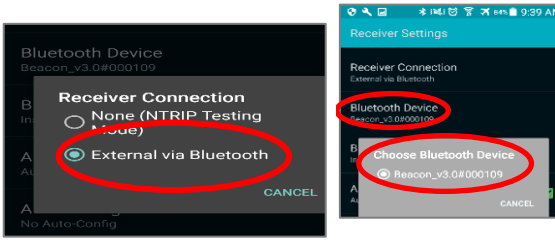
3 Select receiver settings, then receiver connection



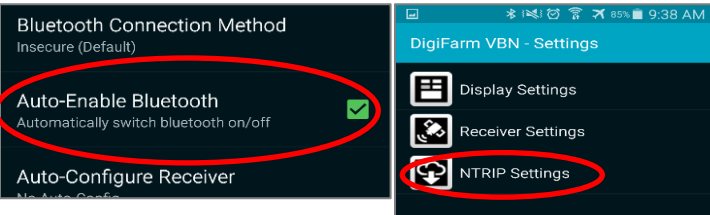
3 Confirm Beacon connection within the app; then select your receiver type; & enter your username & password



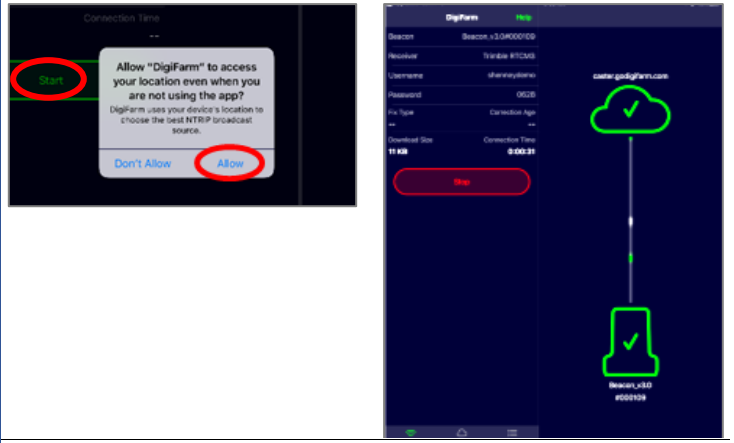
4 Select external via Bluetooth, then choose Bluetooth device



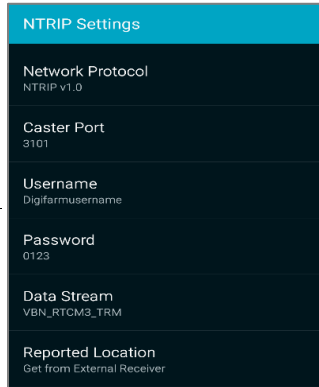
5 Check auto-enable Bluetooth box, then go back & select NTRIP Settings



4 Tap the green Start button and allow location access, then you will start streaming RTK data



6 Select Network protocol NTRIP v1.0, Caster Port 3101, enter your username & password from DigiFarm; download source table; and get from external receiver



7 Return to the app home screen & tap Connect; the mountpoint list will appear—select the correct one; once selected, the app will start streaming RTK data automatically



# DigiFarm

## Quick Reference Card

Trimble FMX/ FM1000

& Beacon