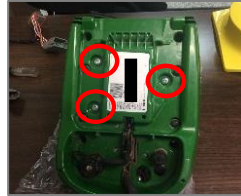


John Deere SF3000/SF6000 John Deere Smart Cable & Beacon Install & Setup

1 Using a T15 torx bit, remove 4 screws & remove yellow dome



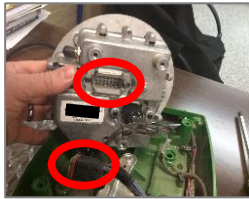
2 Carefully remove decals exposing 3 screws; save decals to reinstall later



3 Remove 3 screws to detach antenna from shroud



4 Lift antenna from shroud to expose main connector & unplug it



5 Reassemble the receiver so the JDSC routes through the square hole in the rear of the shroud



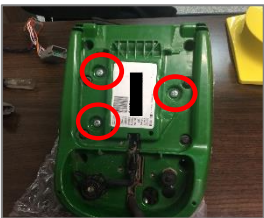
6 Plug JDSC into antenna base & plug Deere connector into the JDSC



7 Gently set antenna base on shroud



8 Install 3 screws & decals previously removed



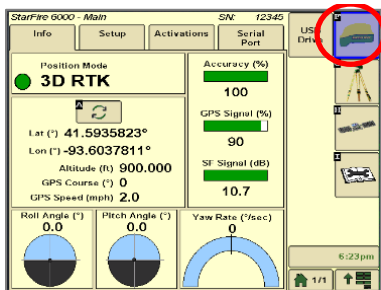
9 Install Beacon connector to back of receiver using screw provided & secure black flap back on receiver



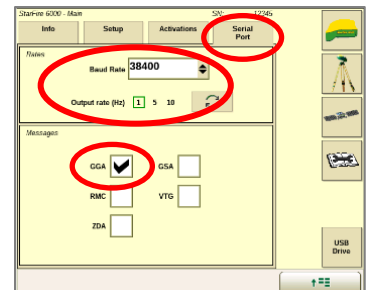
10 Reattach yellow dome onto the shroud & plug in the Beacon



11 Go to the Starfire Main Settings page & select the GPS Receiver icon in the Top right corner (F)

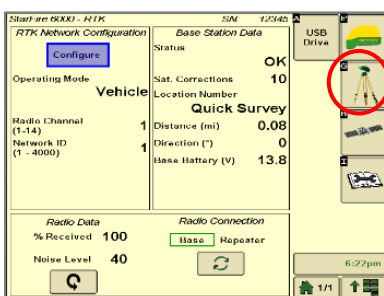


12 Go to the serial port page & confirm: Baud Rate at least 19200, Output rate at 1 Hz & the GGA box check marked

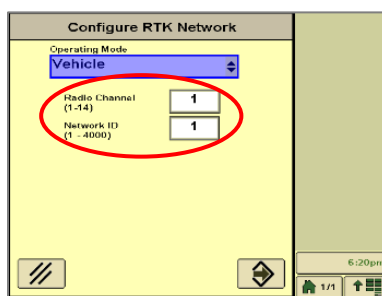


*the JDSC adapter now automatically adjusts to the baud rate entered here

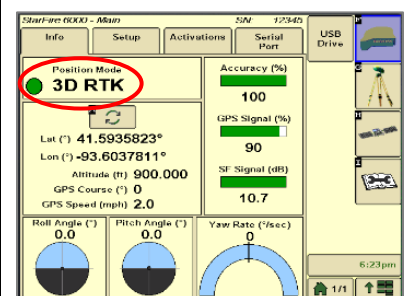
13 Continue to the RTK setup page (G)



14 Set the Radio Channel & Network ID both to 1



15 Confirm RTK fix

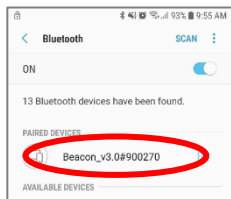


Android Quick Reference Card

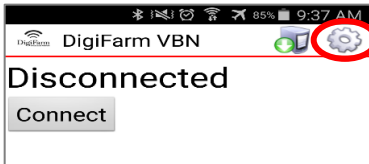
iOS Quick Reference Card

Note: Not all android devices function the same; please try your device before purchasing.

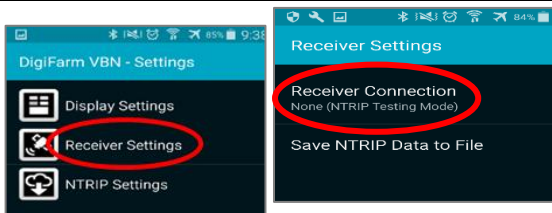
1 Pair the Beacon with android device



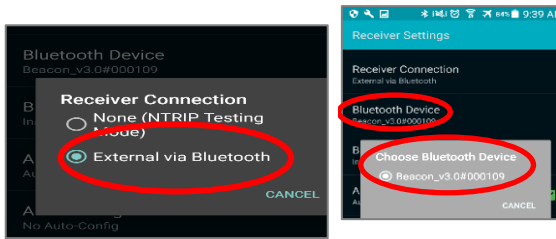
2 Download the **DigiFarm NTRIP Client** app, open it, and select the gear in the top right corner



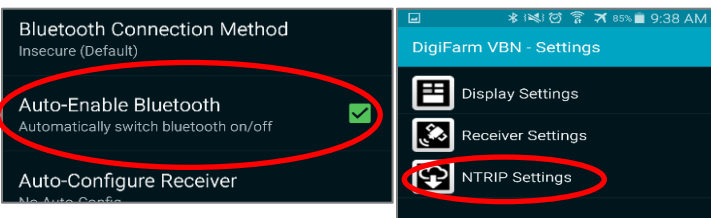
3 Select receiver settings, then receiver connection



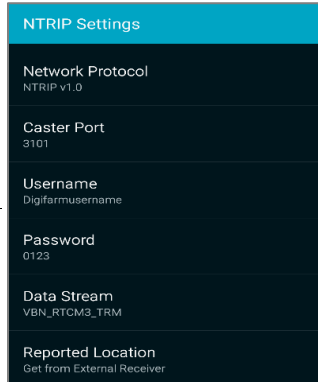
4 Select external via Bluetooth, then choose Bluetooth device



5 Check auto-enable Bluetooth box, then go back & select NTRIP Settings

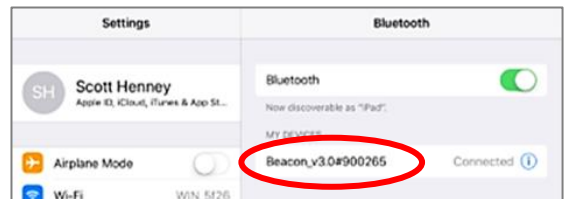


6 Select Network protocol NTRIP v1.0, Caster Port 3101, enter your username & password from DigiFarm; download source table; and get from external receiver

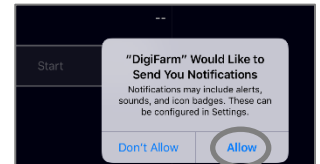


7 Return to the app home screen & tap Connect; the mountpoint list will appear—select the correct one; once selected, the app will start streaming RTK data automatically

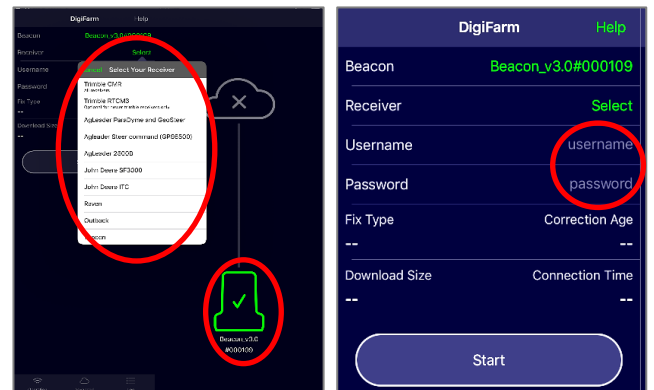
1 Pair the Beacon with the IOS device via the settings app



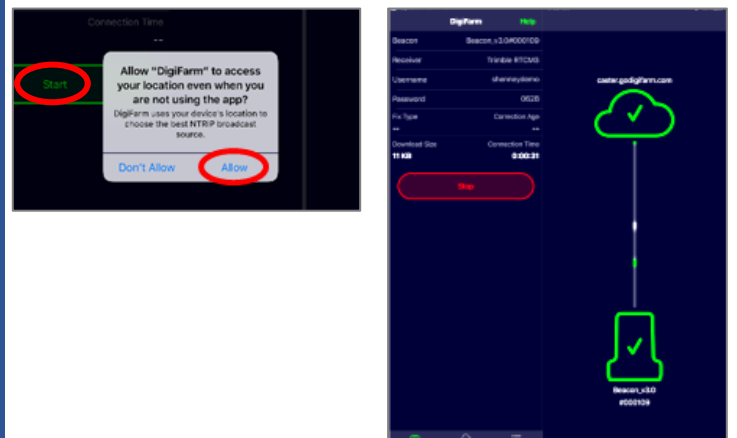
2 Download the **DigiFarm NTRIP Client** app, open it, and allow notifications



3 Confirm Beacon connection within the app; then select your receiver type; & enter your username & password



4 Tap the green Start button and allow location access, then you will start streaming RTK data





DigiFarm

Quick Reference Card

John Deere SF3000/SF6000

JDSC & Beacon