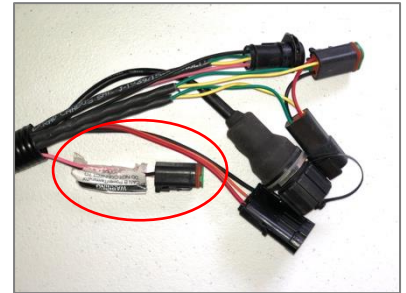



Ag Leader ParaDyme GeoSteer Set Up

Note: A null modem cable from your DigiFarm modem kit is needed for all modems, but not for Beacons.

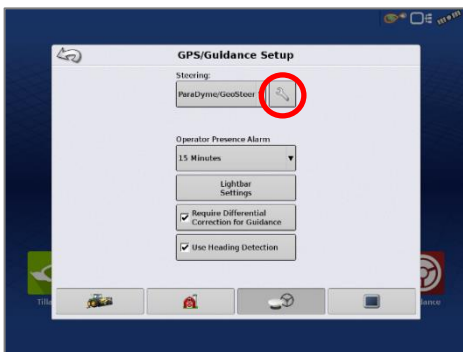
- 1 Begin by connecting the Beacon and adapter to the **Port A connection** on the ParaDyme or GeoSteer cabling
- 2 Connect the Power Tee to the Can B power/ Terminator connection on the Display cable



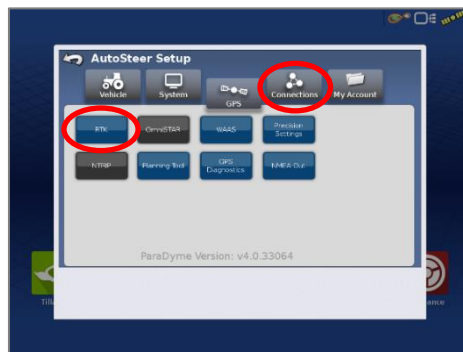
- 3 Tap the Setup wrench icon, then the  icon



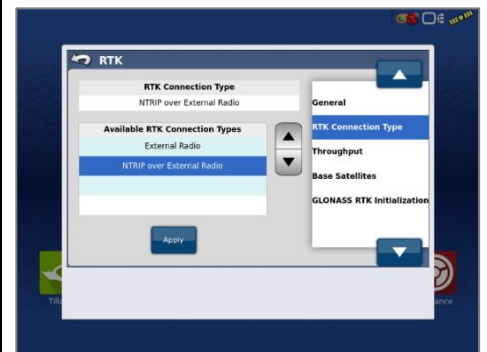
- 4 From the GPS/Guidance setup screen, select the wrench next to ParaDyme/GeoSteer



- 5 Next select the GPS tab, then the RTK icon



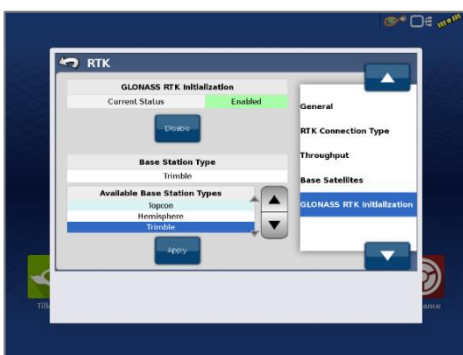
- 6 Select the Connection type on the right & ensure its set to NTRIP over External Radio



- 7 Select GLONASS RTK Initialization on the right & enable it

- 8 Make sure the Base Station Type is set to Trimble

* if GLONASS does not appear, skip to the next step



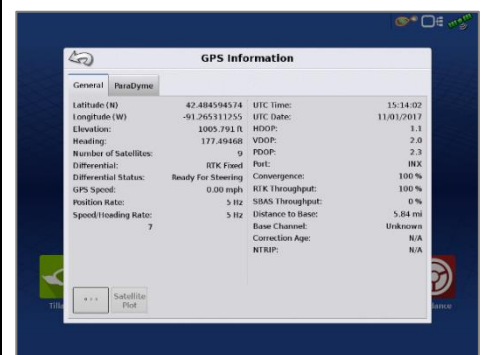
- 9 Back out of this screen & select the NMEA Out icon

- Port A messages should match the screenshot below
- Port A Config> set Baud Rate to 38400



- 10 Back out of this screen, select precision settings & set to "RTK Only"

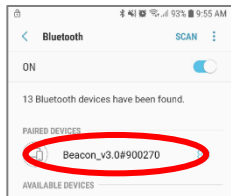
- 11 Return to the run screen & confirm you have throughput & RTK fix



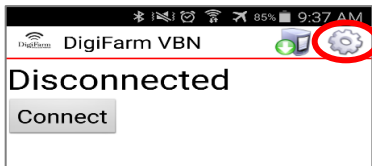
Android Quick Reference Card

Note: Not all android devices function the same; please try your device before purchasing.

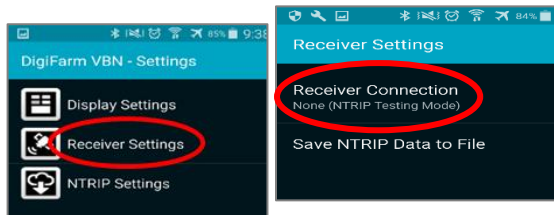
1 Pair the Beacon with android device



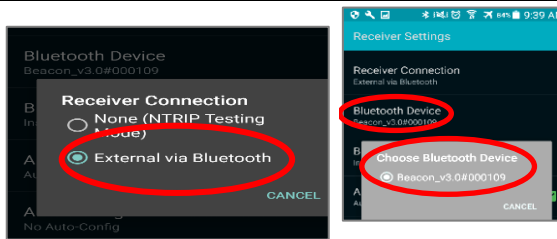
2 Download the DigiFarm NTRIP Client app, open it, and select the gear in the top right corner



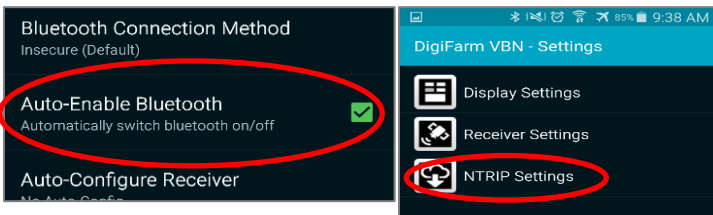
3 Select receiver settings, then receiver connection



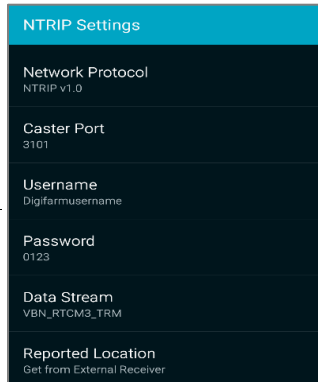
4 Select external via Bluetooth, then choose Bluetooth device



5 Check auto-enable Bluetooth box, then go back & select NTRIP Settings



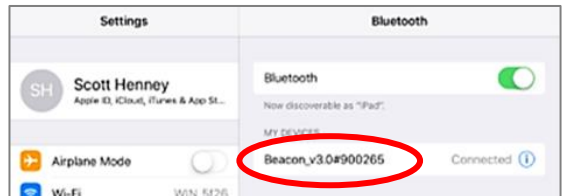
6 Select Network protocol NTRIP v1.0, Caster Port 3101, enter your username & password from DigiFarm; download source table; and get from external receiver



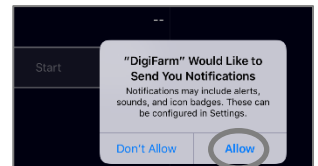
7 Return to the app home screen & tap Connect; the mountpoint list will appear—select the correct one; once selected, the app will start streaming RTK data automatically

iOS Quick Reference Card

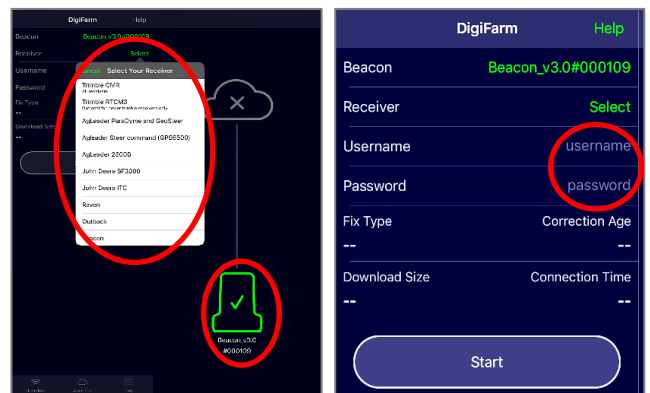
1 Pair the Beacon with the IOS device via the settings app



2 Download the DigiFarm NTRIP Client app, open it, and allow notifications



3 Confirm Beacon connection within the app; then select your receiver type; & enter your username & password



4 Tap the green Start button and allow location access, then you will start streaming RTK data

