

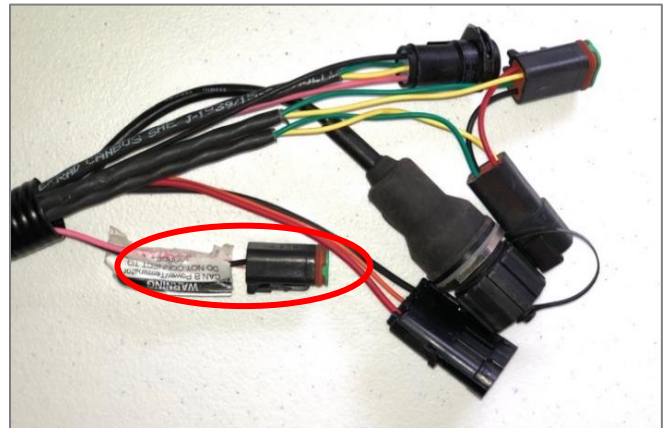
#### Ag Leader 6500 Display Setup


<sup>1</sup> Connect the Beacon and the adapter to the Port B connection on the Ag Leader 6500/7500 cabling

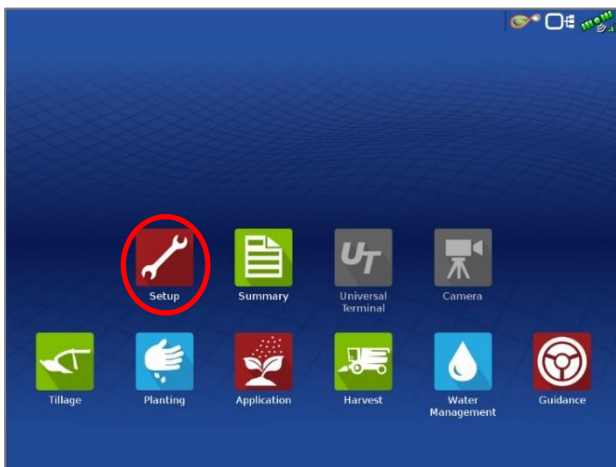
Note: The null modem cable is not needed for Beacons



<sup>2</sup> Connect the Power Tee to the Can B power/terminator connection on the Display cable



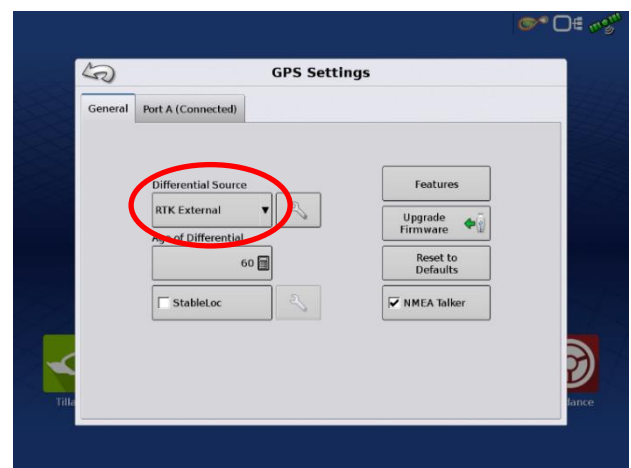
<sup>3</sup> Tap the Setup wrench icon, then the  icon



<sup>4</sup> From the GPS/Guidance setup screen, select the wrench icon next to "Autodetect"



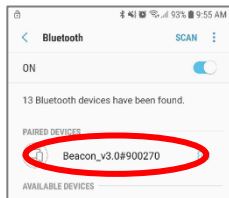
<sup>5</sup> Ensure the Differential source is set to "RTK external"



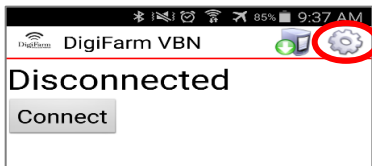
#### Android Quick Reference Card

Note: Not all android devices function the same; please try your device before purchasing.

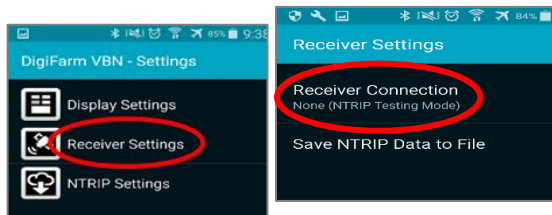
1 Pair the Beacon with android device



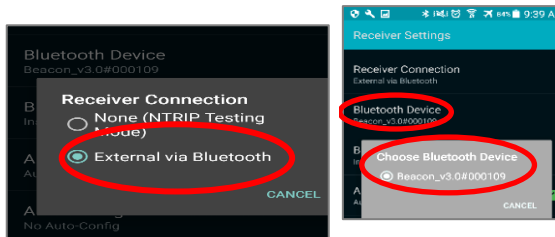
2 Download the **DigiFarm NTRIP Client** app, open it, and select the gear in the top right corner



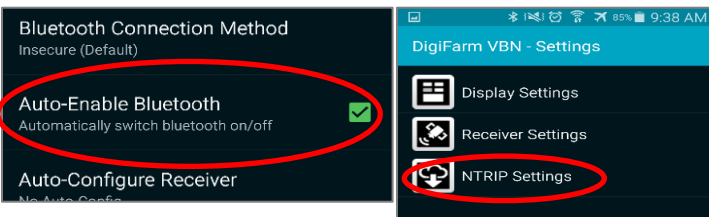
3 Select receiver settings, then receiver connection



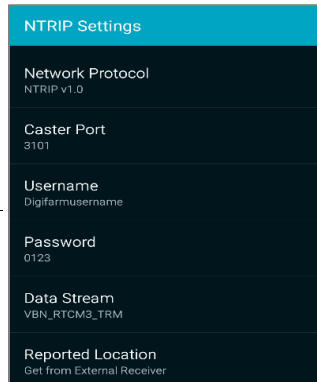
4 Select external via Bluetooth, then choose Bluetooth device



5 Check auto-enable Bluetooth box, then go back & select NTRIP Settings



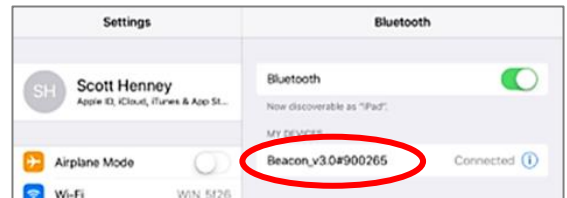
6 Select Network protocol NTRIP v1.0, Caster Port 3101, enter your username & password from DigiFarm; download source table; and get from external receiver



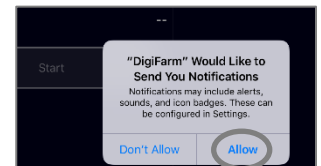
7 Return to the app home screen & tap Connect; the mountpoint list will appear—select the correct one; once selected, the app will start streaming RTK data automatically

#### iOS Quick Reference Card

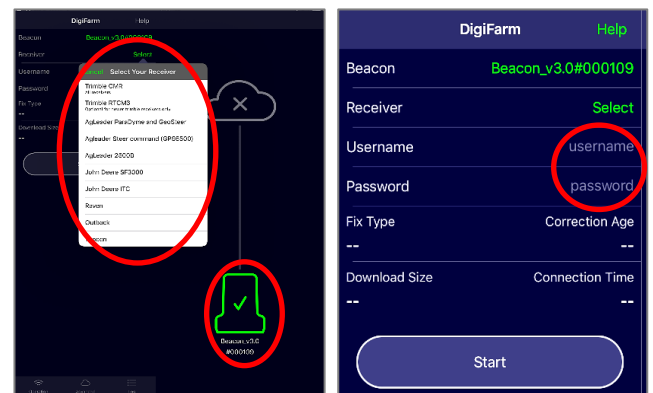
1 Pair the Beacon with the IOS device via the settings app



2 Download the **DigiFarm NTRIP Client** app, open it, and allow notifications



3 Confirm Beacon connection within the app; then select your receiver type; & enter your username & password



4 Tap the green Start button and allow location access, then you will start streaming RTK data

