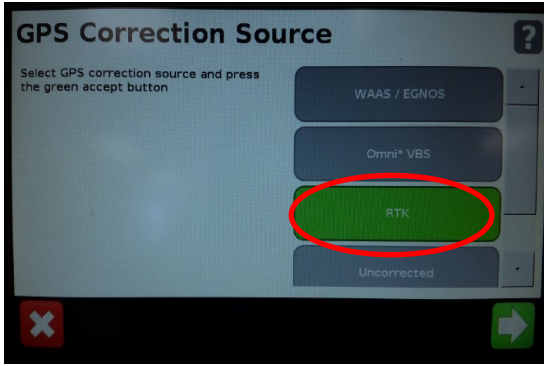
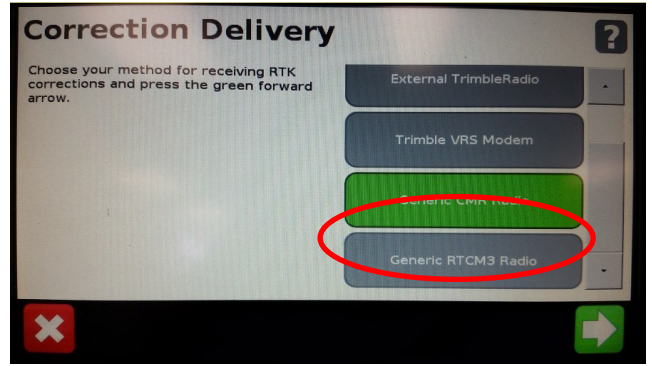


Step 1: Begin By installing the RV50 Cable into Port A of the Receiver Select the Wrench -> GPS/GNSS -> GPS/GNSS Setup

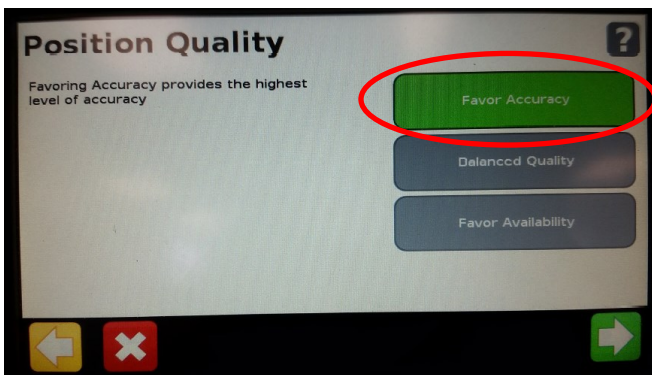
Step 2: Select RTK as the correction source.



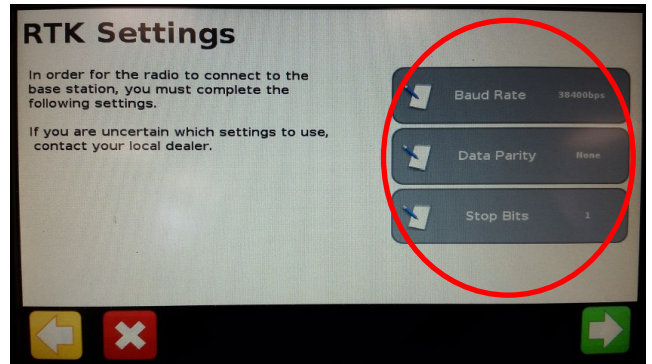
Step 3: Select Generic RTCM3 Radio.



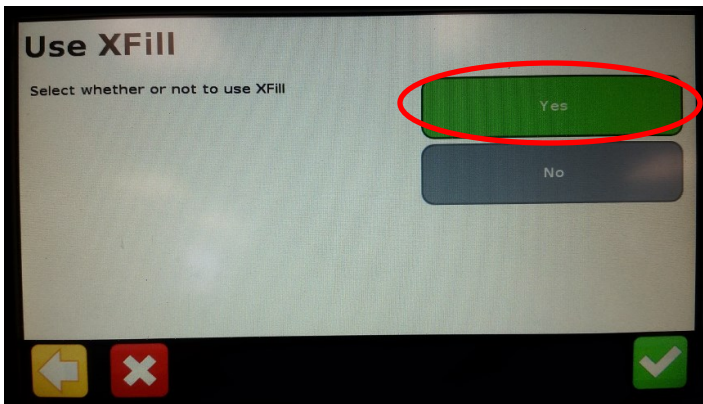
Step 4: Select Favor Accuracy.



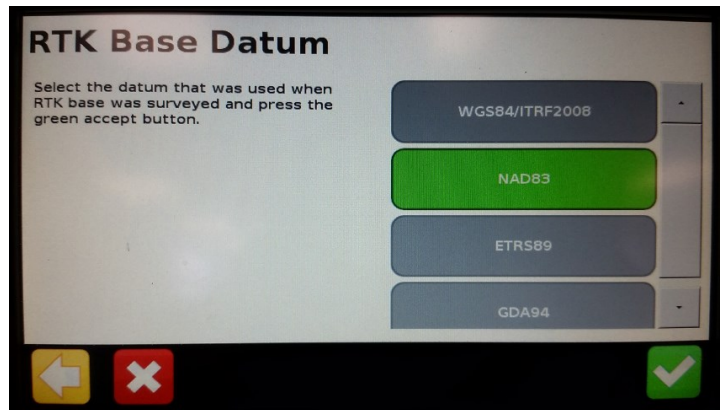
Step 5: Confirm a 38400 Baud rate, Data Parity None, and Stop bits 1.



Step 6: Select yes to use xFill, Then proceed through the next pages to the RTK Base Datum page.

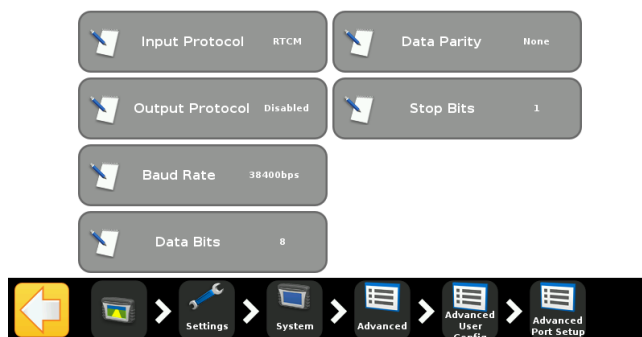


Step 7: Select NAD83 as the Datum Type



You can now return to the General Settings menu and select System -> Advanced -> enable the advanced user config -> enter advanced user config -> select advanced port setup. Confirm the port that the Beacon is physically connected to is setup the same as the screenshot below.

**Serial Port A**



**\*Note- If this unit was ordered with a subscription, it will be preprogrammed and plug and play ready. The following instruction**

Log into the device via WAN static IP (166.XXX.XXX.XXX:8080) or LAN connection (192.168.1.1:8080) on Port 8080 (shown in ip con-

The username and password to log into these devices are as follows

Username: digifarm

Password: digifarm

You will then be directed to the page shown below. On this page you can select a receiver preset based on the receiver type you have, then enter your username and password. Save device info at the bottom then select the reboot icon at the top of the screen

### DigiFarm: NTRIP Client Settings Manager

Logged in as: digifarm | [Log Out](#)

Presets

NovAtel (Raven: RS1, Cruiser II with RTK, 600s, Envizio Pro/Pro II, Viper 4)

Host

caster.godigifarm.com

Port

3101

Mount Point

VBN\_RTCM3\_NOV

Serial Port - Baud Rate

38400

Username

Password

Internal GPS

Manual GPS

Manual GPS - Latitude (Example: "4043.124436,N")

Manual GPS - Longitude (Example: "9640.586358,W")

[Save Changes](#)

### RV50 hardware Installation Guide

