
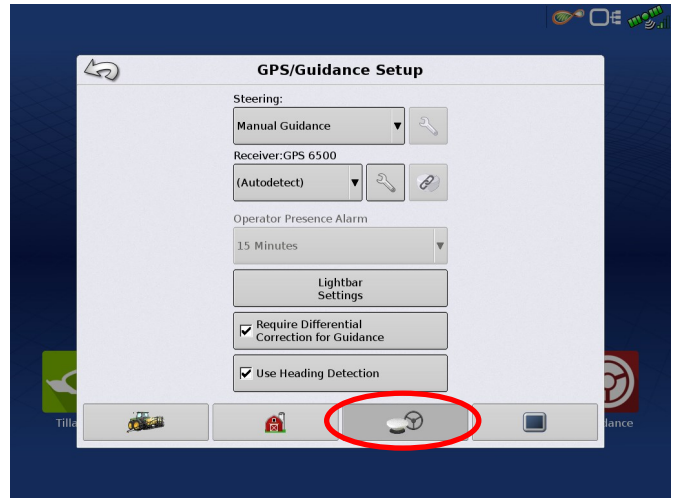
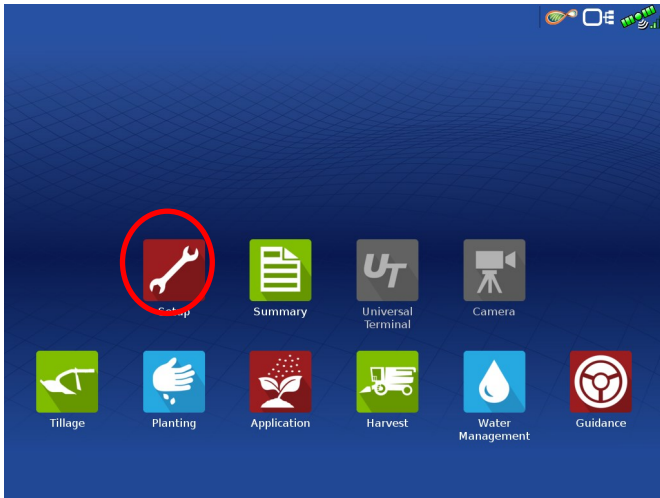


Ag Leader 6500 Quick Reference Card

Begin by connecting the RV50 Cabling to the Port B connection on the Ag Leader GPS cabling.

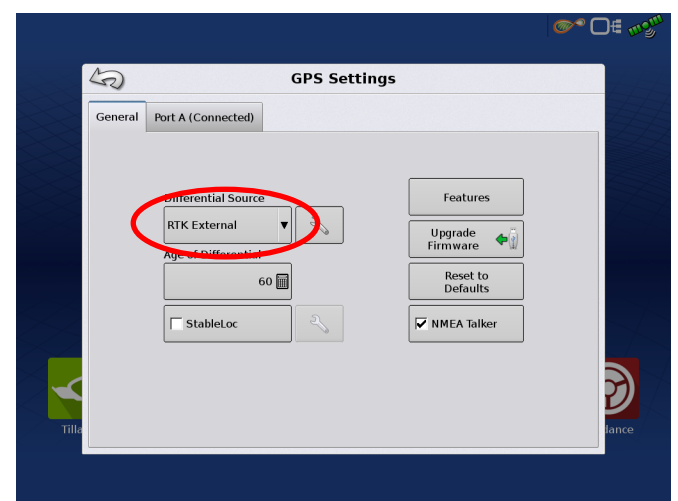
Next Connect the Power Tee to the Steer Command main power connection on the Display cable

Select the wrench —> Then select the 



From the GPS/Guidance setup screen select the wrench next to "Autodetect"

Next Ensure the Differential source is set to RTK external.



***Note- If this unit was ordered with a subscription, it will be preprogrammed and plug and play ready. The following instruction**

Log into the device via WAN static IP (166.XXX.XXX.XXX:8080) or LAN connection (192.168.1.1:8080) on Port 8080 (shown in ip con-

The username and password to log into these devices are as follows

Username: digifarm

Password: digifarm

You will then be directed to the page shown below. On this page you can select a receiver preset based on the receiver type you have, then enter your username and password. Save device info at the bottom then select the reboot icon at the top of the screen

DigiFarm: NTRIP Client Settings Manager

Logged in as: digifarm | [Log Out](#)

Presets

NovAtel (Raven: RS1, Cruiser II with RTK, 600s, Envizio Pro/Pro II, Viper 4)

Host

caster.godigifarm.com

Port

3101

Mount Point

VBN_RTCM3_NOV

Serial Port - Baud Rate

38400

Username

Password

Internal GPS

Manual GPS

Manual GPS - Latitude (Example: "4043.124436,N")

Manual GPS - Longitude (Example: "9640.586358,W")

[Save Changes](#)

RV50 hardware Installation Guide

